

±18,568 SF DISTRIBUTION BUILDING ON ±2.64 AC FOR LEASE

411 S 33rd Ave, Phoenix, AZ 85009



8767 E. Via de Ventura
Suite 290
Scottsdale, AZ 85258
RGcre.com

MAX SCHUMACHER, SIOR
480.214.9403
Max@RGcre.com

PATRICK SHEEHAN, SIOR
480.214.9405
Patrick@RGcre.com

JACK HANSEN
480.214.9421
Jack@RGcre.com

FOR LEASE

±18,568 SF DISTRIBUTION BUILDING ON ±2.64 ACRES

Site Information

411 S 33rd Ave
Phoenix, AZ 85009

FEATURES

- ±18,568 SF Building
 - Three (3) 12' x 14' Grade Level Doors
 - Two (2) 12' x 14' Truckwell Doors
 - 24' - 28' Clear Height
 - Fire Sprinklered
- ±2.64 AC (114,998 SF) Site
- Oversized Fenced Yard
- Three (3) Points of Ingress/Egress
- Zoned A-1/A-2, City of Phoenix
- Close Proximity to I-17, I-10, and Full Diamond Interchange
- APN #: 109-56-034G, 109-56-030B



The information contained herein has been obtained from sources we believe to be reliable, however, Rein & Grossehme and its agents have not conducted any investigation regarding these matters and make no warranty or representation expressed or implied regarding the accuracy or completeness of the information. Interested parties need to verify any information that is critical to their decision process and bear all risk for inaccuracies. References to square footage or age are approximate.

FOR LEASE

±18,568 SF DISTRIBUTION BUILDING ON ±2.64 ACRES

Property Photos



8767 E. Via de Ventura
Suite 290
Scottsdale, AZ 85258
RGcre.com

MAX SCHUMACHER, SIOR
480.214.9403
Max@RGcre.com

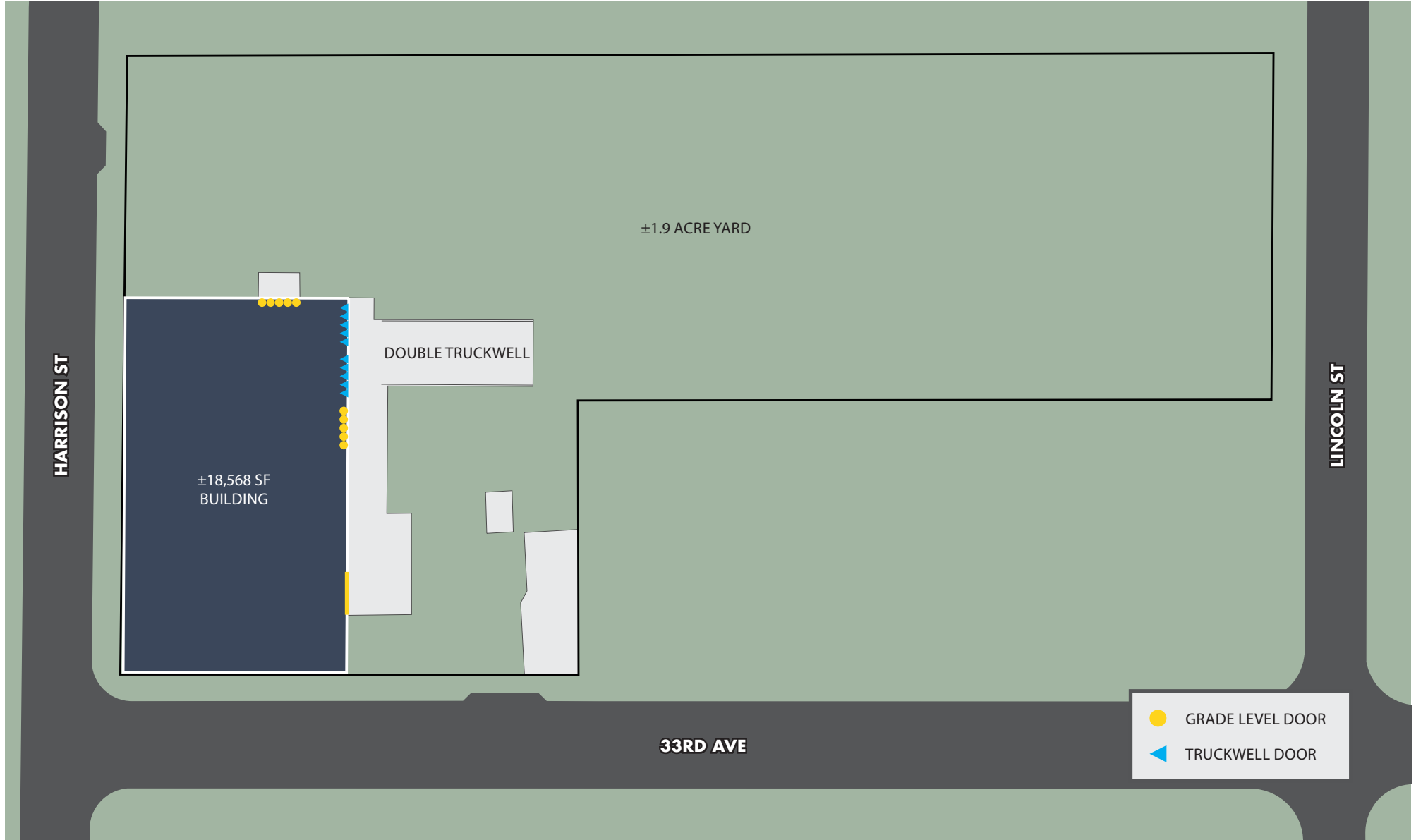
PATRICK SHEEHAN, SIOR
480.214.9405
Patrick@RGcre.com

JACK HANSEN
480.214.9421
Jack@RGcre.com

FOR LEASE

±18,568 SF DISTRIBUTION BUILDING ON ±2.64 ACRES

Site Plan



8767 E. Via de Ventura
Suite 290
Scottsdale, AZ 85258
RGcre.com

MAX SCHUMACHER, SIOR
480.214.9403
Max@RGcre.com

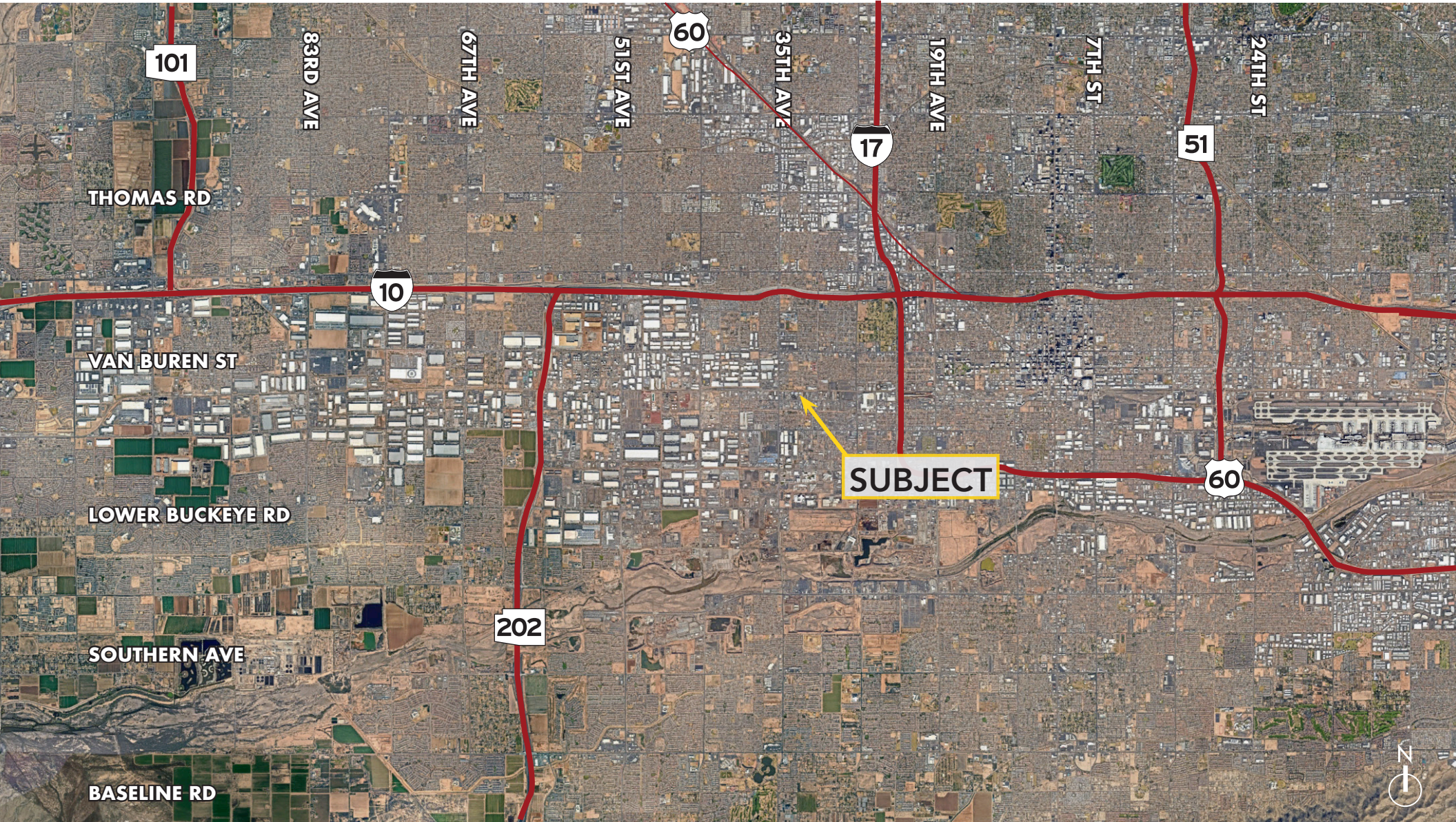
PATRICK SHEEHAN, SIOR
480.214.9405
Patrick@RGcre.com

JACK HANSEN
480.214.9421
Jack@RGcre.com

FOR LEASE

±18,568 SF DISTRIBUTION BUILDING ON ±2.64 ACRES

Location Maps



8767 E. Via de Ventura
Suite 290
Scottsdale, AZ 85258
RGcre.com

MAX SCHUMACHER, SIOR
480.214.9403
Max@RGcre.com

PATRICK SHEEHAN, SIOR
480.214.9405
Patrick@RGcre.com

JACK HANSEN
480.214.9421
Jack@RGcre.com